

# Clinical Audit Tool Recipe Group

## Influenza – At Risk Patients



All patients in this recipe group are considered to be more likely to experience complications as a result of influenza. These Clinical Audit Tool Recipes have been submitted by the Influenza Specialist Group (ISG).

### Rationale:

The Australian Immunisation Handbook advises that “the administration of influenza vaccine to individuals at risk of complications of infection is the single most important measure in preventing or attenuating influenza infection and preventing mortality”.

The influenza vaccine is now available free to at-risk patients under the National Immunisation Program<sup>1</sup>.

It is recommended that the influenza vaccine be given annually. Therefore the recipe activities should be undertaken **before** the beginning of the flu season, **and** at mid-season in order to identify those who missed out first time around. In addition, it is recommended that an end of the season clinical audit review be undertaken.

Undertaking the recipes pre-season will enable the practice to identify demand, and to assist in managing resources (such as quantity of vaccine required, refrigerator capacity needed, education materials etc). There will also be operational issues to be considered, such as how the appointments will be run, billed and which staff will undertake the vaccinations.

### Target:

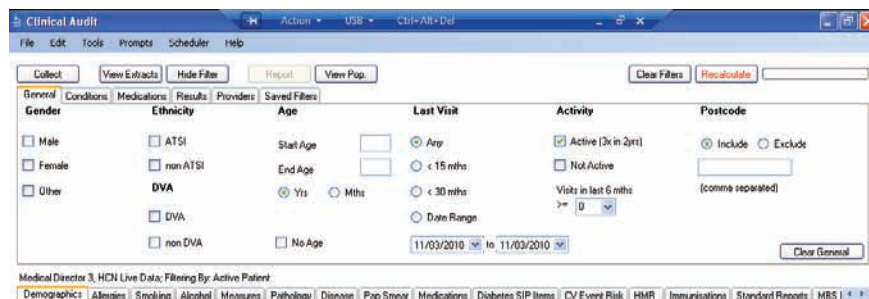
To effectively target patients at risk. The at risk groups include:

- 1 **Patients ≥ 65 years of age** (Recipe 1, page 2)
- 2 **ATSI patients ≥ 15 years of age** (Recipe 2, page 3)
- 3 **Pregnant women** (Recipe 3, page 4)
- 4 **Patients ≥ 6 months with conditions predisposing to severe influenza:** these include CHD, heart failure, COPD, asthma, diabetes and renal failure (Recipe 4, page 5)

### • CAT Starting Point:

This will be the standard starting point for the INFLUENZA CAT Recipes

- 1 CAT Open
- 2 Population Extract **Loaded** and Extract Pane **Hidden**
- 3 Filter Pane **Open** and under the **General** tab
- 4 OPTIONAL: **Active Patients (3x < 2 years)** selected



THE ROYAL AUSTRALIAN  
COLLEGE OF  
GENERAL PRACTITIONERS

For more informaton visit [www.clinicalaudit.com.au](http://www.clinicalaudit.com.au)

# Recipe 1: Patients $\geq 65$ years of age

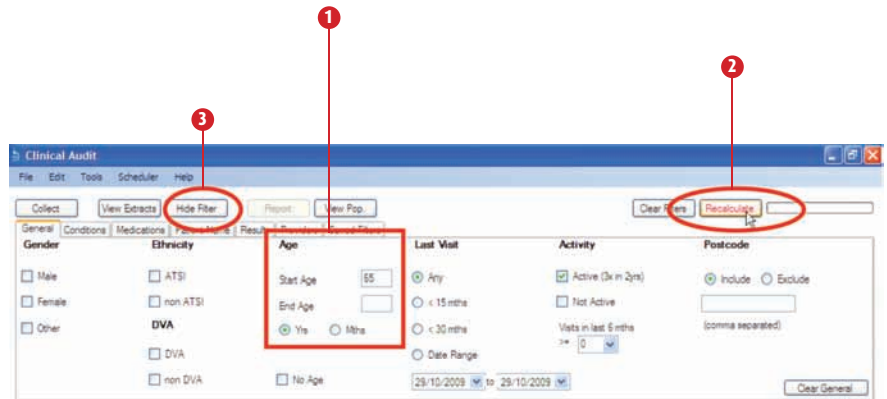
## • Identify Patients:

Once these steps have been followed, it can be saved in **Saved Filters** for use next year. See end of recipe group for more information on page 6.

## • Complete the CAT Starting Point.

### • In the Filters Pane:

- 1 In **General** tab, type 65 in the Start Age field
- 2 Click **Recalculate**
- 3 Click **Hide Filters**



### • In the Report Pane:

- 1 Select the **Demographics** tab

This provides the practice with a breakdown of all those patients who are  $\geq 65$  years of age. All patients in this group are considered to be more likely to experience complications as a result of influenza, and should be recalled for vaccination. We recommend that the large lists of patients are undertaken in manageable groups, e.g. 65-69 age group first.

### • To Export Patient List to Microsoft Excel:

- 1 Click on the **65-69** bar of the Demographics Breakdown
- 2 Click on the **Export** tab at the top of the Patient Re-Identification window
- 3 Click on **Excel**
- 4 Choose a file name (e.g. Influenza at risk\_65\_69.xls) and a location to save to (e.g. Create a folder C:/ClinicalAudit/CAT Patient FollowUp)
- 5 Click **Save**



The practice now has a list of patients with contact details in MS Excel which can then be used to:

- Go back through the individual patient records in the GP Clinical Desktop System (CDS) and update known records
- Phone or prepare Mail Merge to recall patients for follow up

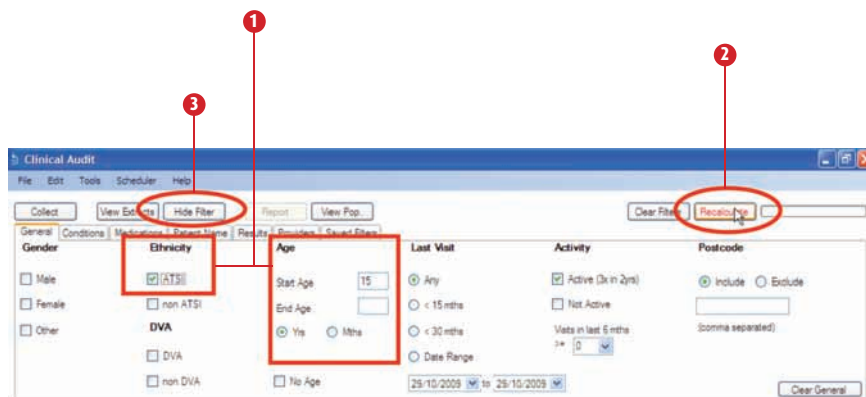
## • Identify Patients:

Once these steps have been followed, it can be saved in **Saved Filters** for use next year.  
See end of recipe group for more information on page 6.

## • Complete the CAT Starting Point.

### • In the Filters Pane:

- 1 In **General** tab, tick ATSI in the Ethnicity selection and type '15' in the Start Age field
- 2 Click **Recalculate**
- 3 Click **Hide Filters**



### • In the Report Pane:

- 1 Select the **Demographics** tab

This provides the practice with a list of all ATSI patients  $\geq 15$  years of age.  
All patients in this group are considered to be more likely to experience complications as a result of influenza, and should be recalled for vaccination.

### • To Export Patient List to Microsoft Excel:

- 1 Click on the **View Pop.** at the top of the Patient Re-Identification window
- 2 Click on **Excel**
- 3 Choose a file name (e.g. ATSI\_flu\_followup.xls) and a location to save to (e.g. Create a folder C:/ClinicalAudit/CAT Patient FollowUp)
- 4 Click **Save**

The practice now has a list of patients with contact details in MS Excel which can then be used to:

- Go back through the individual patient records in the GP Clinical Desktop System (CDS) and update known records
- Phone or prepare Mail Merge to recall patients for follow up

# Recipe 3: Pregnant women

## Identify Patients:

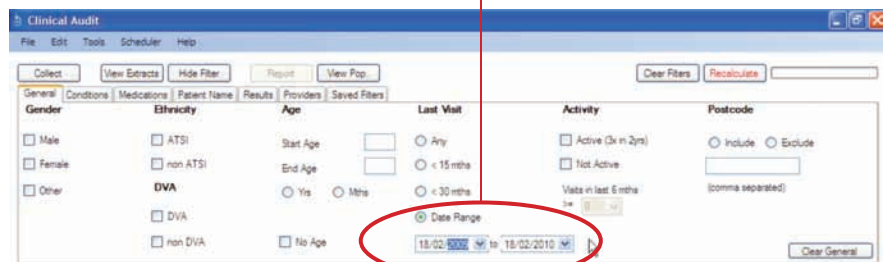
Once these steps have been followed, it can be saved in **Saved Filters** for use next year. See end of recipe group for more information on page 6.

## Complete the CAT Starting Point.

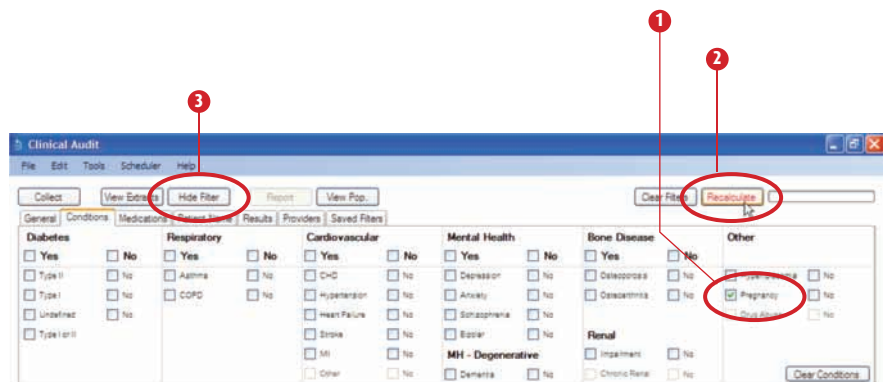
## In the Filters Pane:

PLEASE NOTE! Practices may choose to select the Last Visit filter and enter a Date Range rather than choosing the **OPTIONAL: Active Patients (3x <2 years)** tab

Entering a Date Range instead of the choosing the **OPTIONAL: Active Patients (3x <2 years)** tab



- 1 In **Conditions** tab, tick Pregnancy in the Other Conditions section
- 2 Click **Recalculate**
- 3 Click **Hide Filters**



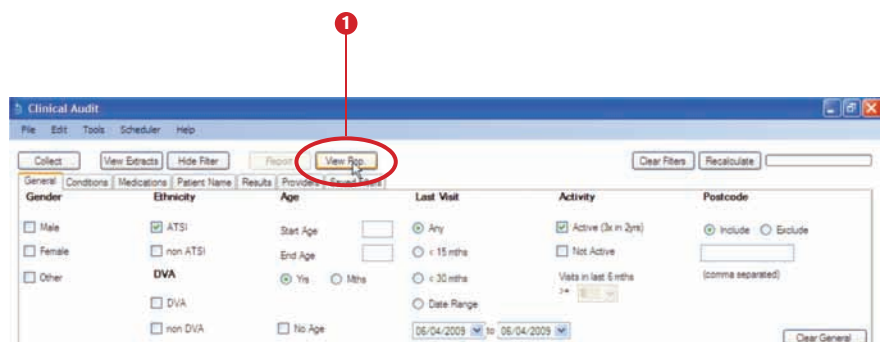
## In the Report Pane:

- 1 Select **Demographics** tab

This provides a list of all those patients who are pregnant. Pregnant women are considered to be more likely to experience complications as a result of influenza, and vaccination is recommended across all stages of pregnancy.

## To Export Patient List to Microsoft Excel:

- 1 Click on the **View Pop.** at the top of the Patient Re-Identification window
- 2 Click on **Excel**
- 3 Choose a file name (eg. Pregnant\_flu\_followup.xls) and a location to save to (e.g. Create a folder C:/ClinicalAudit/CAT Patient FollowUp)
- 4 Click **Save**



The practice now has a list of patients with contact details in MS Excel (as described in the previous recipes)

# Recipe 4: Patients ≥ 6 months with conditions predisposing to severe influenza

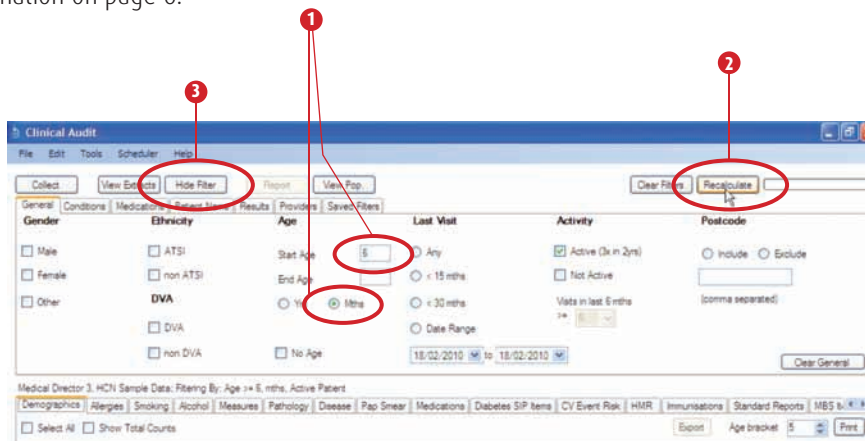
## Identify Patients:

Once these steps have been followed, it can be saved in **Saved Filters** for use next year. See end of recipe group for more information on page 6.

## Complete the CAT Starting Point.

### In the Filters Pane:

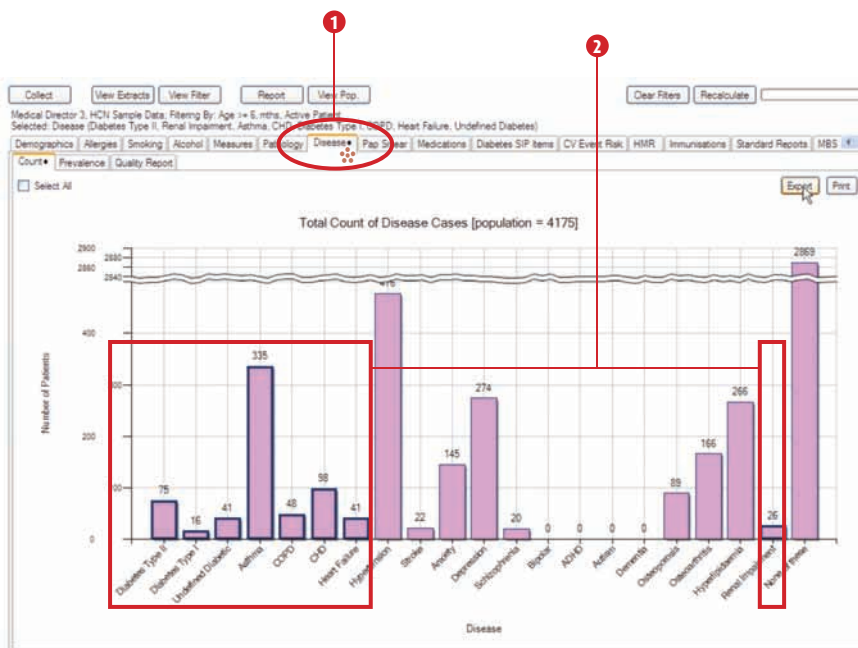
- 1 In **General** tab, type '6' in the Start Age field, and select months
- 2 Click **Recalculate**
- 3 Click **Hide Filters**



### In the Report Pane:

- 1 Select **Disease** tab
- 2 Click on the bar segments: diabetes II, diabetes I, undefined diabetes, asthma, COPD, CHD, heart failure and renal impairment.

This provides the practice with a breakdown of all those patients who are ≥6 months of age with conditions predisposing to severe influenza. We recommend that the large lists of patients are undertaken in manageable groups, e.g. Diabetes group first.



Notice that the Disease tab now has a small 'v' on it. This indicates that segment selections has been made on this tab.

## To Export Patient List to Microsoft Excel:

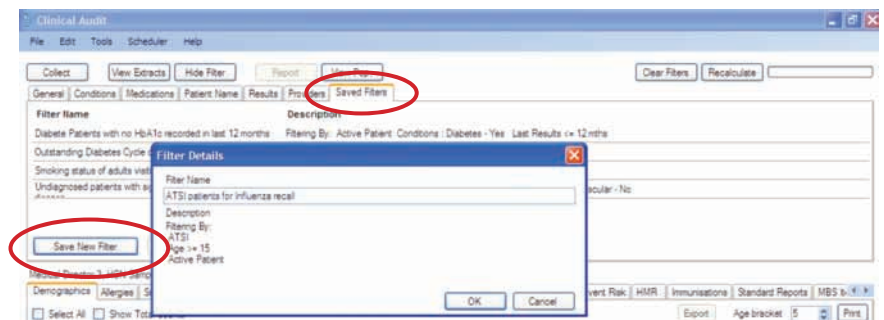
- 1 Click on the **Export** icon at the top of the Patient Re-Identification window
- 2 Click on **Excel**
- 3 Choose a file name (eg. Db\_risk\_flu\_pts.xls) and a location to save to (e.g. Create a folder C:/ClinicalAudit/CAT Patient FollowUp)
- 4 Click **Save**

The practice now has a list of patients with contact details in MS Excel which can then be used to:

- Go back through the individual patient records in the GP Clinical Desktop System (CDS) and update known records
- Phone or prepare Mail Merge to recall patients for follow up

The **Saved Filters** tab allows a set of filter criteria to be saved which can be reloaded at a later time and run. This gives the ability for practices to run the same filters over intervals of time and compare results such as the Influenza Clinical Audit described below.

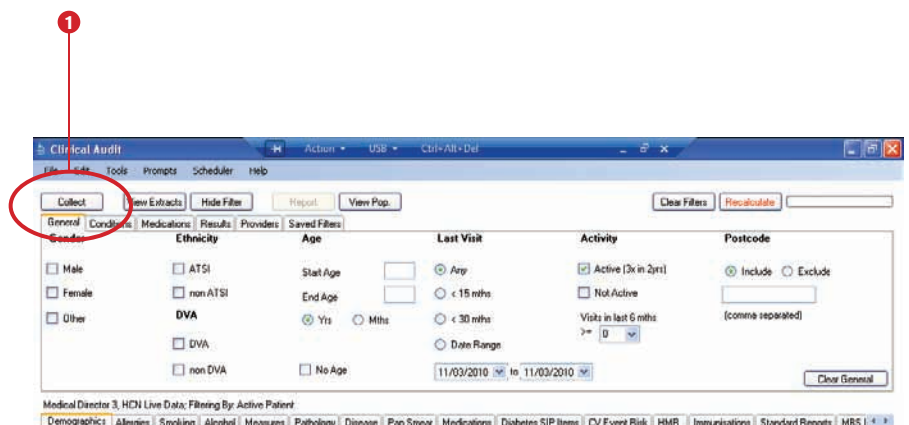
At the completion of each of the four recipes, save the recipe to re-run as a mid-season reminder and in preparation for the flu season the following year.



# Mid season clinical audit of influenza vaccinations

Mid flu season, identify high risk patients who have not yet had their flu vaccination.

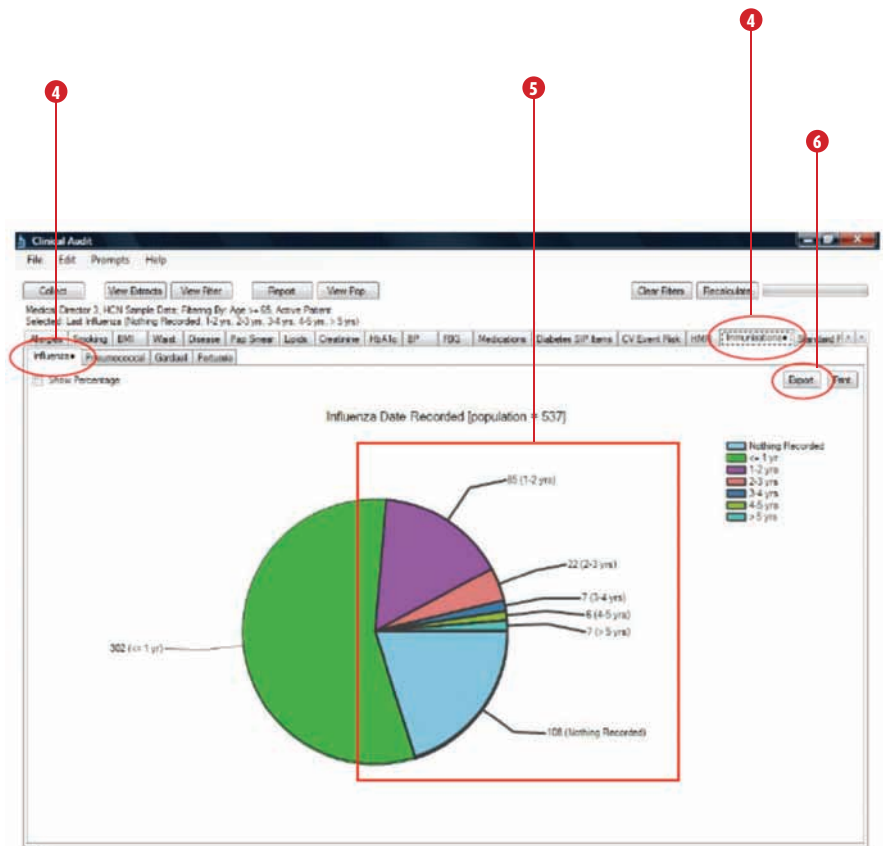
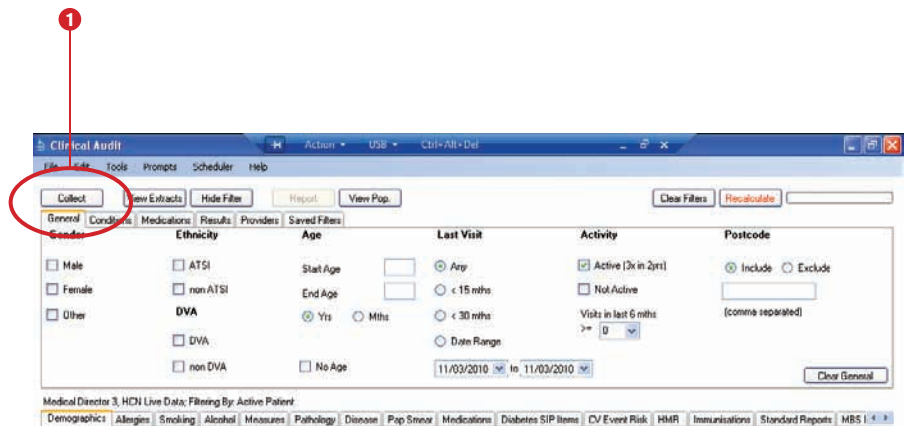
- 1 Run new **Collect** to extract most recent data
- 2 Filter Pane Open and, under the **General** tab select **Last Visit** and choose dates for this year's flu season such as 1 April to current date (e.g. May)
- 3 Click **Recalculate**
- 4 Select **Immunisations** tab and click on the **Influenza** tab.
- 5 Click on all segments except **<= 1 yr** as this group has already visited during this year's flu season
- 6 Click **Export**
- 7 Repeat recipes 1-4 and compare the new list against those with a flu vaccination using the **Refine Selection** button in the **Export window** or using advanced filters in Excel



At the end of the flu season, a quality care audit can be undertaken using the CAT tool.

- 1 Run new **Collect** to extract most recent data
- 2 Filter Pane Open and, under the **General** tab select **Last Visit** and choose dates for this year's flu season such as 1 April to end of season
- 3 Click **Recalculate**
- 4 Select **Immunisations** tab and click on the **Influenza** tab
- 5 Click on all segments except **<= 1 yr** as this group is already up to date with their vaccine
- 6 Click **Export**

The list of eligible patients with a vaccine given over 1 year ago is now produced.



These Clinical Audit Tool Recipes were submitted by the Influenza Specialist Group (ISG).



For more information visit:  
[www.influenzaspecialistgroup.org.au](http://www.influenzaspecialistgroup.org.au)

#### REFERENCE

- 1 Those eligible for free influenza vaccine include:
  - Those under 65 living with:
    - Heart disease
    - Chronic lung disease (including asthma)
    - Diabetes
    - Chronic kidney failure
    - Neuromuscular disorders
    - Weakened immune defences
  - Pregnant women
  - Aboriginal and Torres Strait Islanders aged  $\geq 15$  years
  - Everyone aged  $\geq 65$  years

For full information on all at risk categories please view:  
<http://www.health.gov.au/internet/immunise/publishing.nsf/Content/Handbook-influenza>



THE ROYAL AUSTRALIAN  
COLLEGE OF  
GENERAL PRACTITIONERS

For more informaton visit [www.clinicalaudit.com.au](http://www.clinicalaudit.com.au)