



CLINICAL AUDIT TOOL

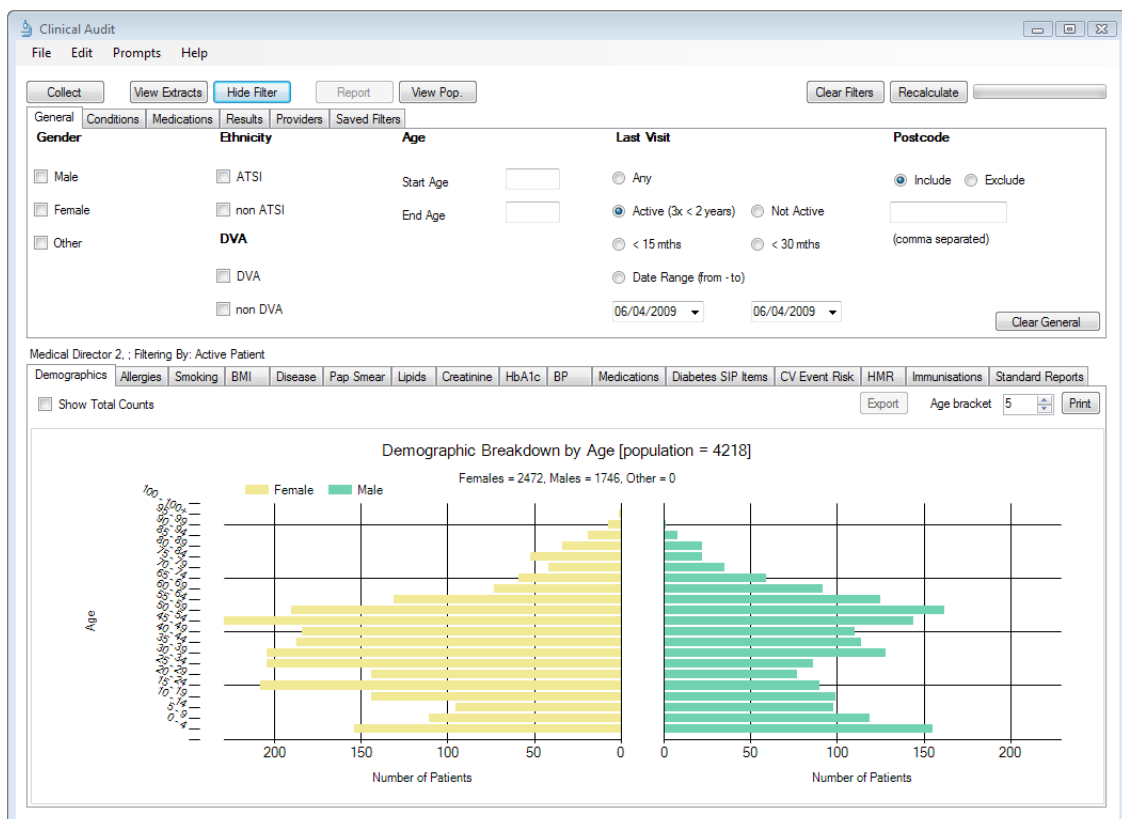
Recipe Name: Identify ALL outstanding Diabetes Cycle of Care items for each of the diabetic patients in the practice

Rationale: The Diabetes Cycle of Care is established as a best practice standard for patient outcomes and management of diabetes patients. Practice Incentive Payments (PIPs) of \$35 per patient are available to practices for completed Diabetes Cycles of Care.

Target: To effectively manage the care of patients with diabetes.

- CAT Starting Point:**
1. CAT Open
 2. Population Extract Loaded and Extract Pane "Hidden"
 3. **OPTIONAL ONLY***: Filter Pane Open and, under the General Tab, "Active Patients (3x < 2 years)" selected

**The decision to select either "Active" or "All" patients is left to the practice to make*



THE ROYAL AUSTRALIAN
COLLEGE OF
GENERAL PRACTITIONERS



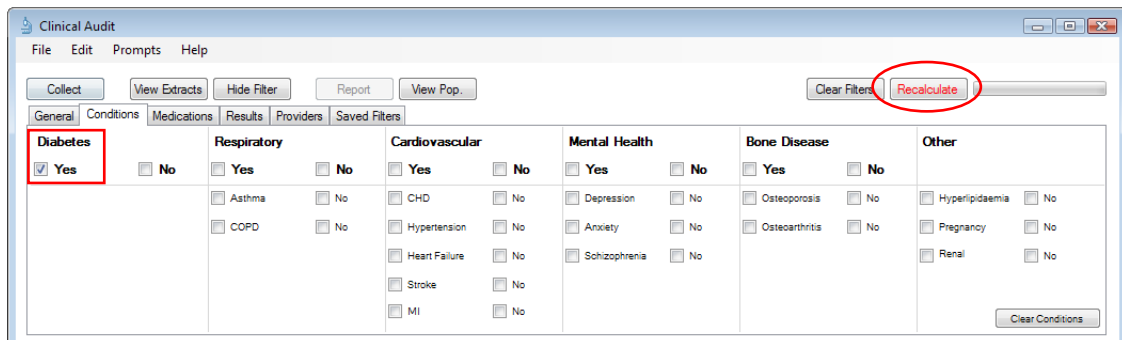
CLINICAL AUDIT TOOL

RECIPE

Identify Patients:

In the Filters Pane

1. In "Conditions" Tab, select Diabetes "Yes"
2. Click "Recalculate"



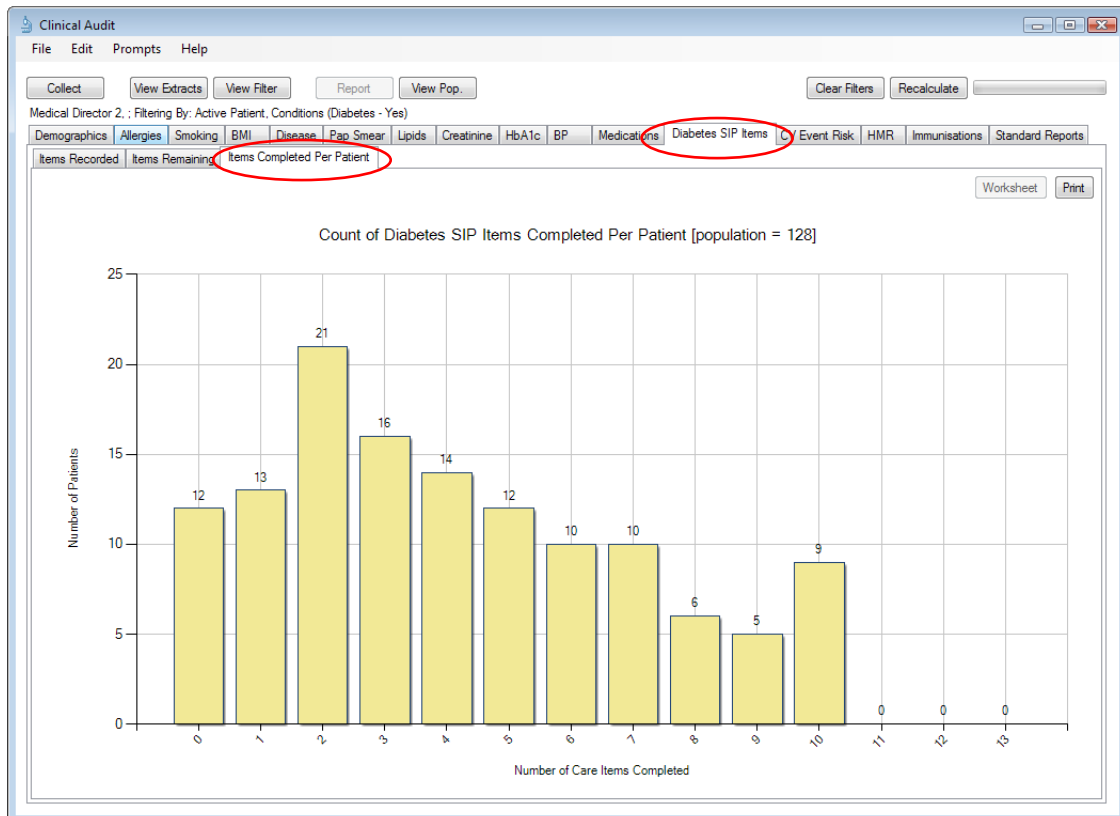
3. Click "Hide Filters"



CLINICAL AUDIT TOOL

In the Report Pane:

1. Select "Diabetes SIP Items" Tab
2. Select "Items Completed Per Patient" sub-Tab



3. Click each of the Bars in the Bar Graph - if the Bar is too small OR zero, click on the number above the Bar INCLUDING the zero(s)
4. Click "Worksheet" (which has replaced the "Export" option in this instance)



CLINICAL AUDIT TOOL



Reidentifying Report [patient count = 20] - DIABETES SIP WORKSHEET
 Filtering By: Active Patient, Conditions (Diabetes - Yes), Selected: Diabetes SIP Items Completed (8, 9, 10)

Surname	First Name	Sex	D.O.B	HbA1c	Eye	BMI <6mths	BMI 6-12mths	BP <6mths	BP 6-12mths	Foot <6mths	Foot 6-12mths	Chol	Trig	HDL	MA1b	Smoking
Surname	Firstname	M	01/01/1960	●		●	●	●	●			●	●			●
Surname	Firstname	F	01/01/1960	●	●			●	●			●	●	●	●	
Surname	Firstname	M	01/01/1960	●				●	●	●		●	●	●		●
Surname	Firstname	M	01/01/1960	●		●	●		●			●	●	●		●
Surname	Firstname	M	01/01/1960	●		●	●	●	●			●	●	●		●
Surname	Firstname	M	01/01/1960	●		●	●	●	●			●	●	●	●	●
Surname	Firstname	M	01/01/1960	●		●	●	●	●			●	●	●	●	●
Surname	Firstname	M	01/01/1960	●		●	●	●	●			●	●	●	●	●
Surname	Firstname	M	01/01/1960	●		●	●	●	●			●	●	●	●	●
Surname	Firstname	M	01/01/1960	●		●	●	●	●			●	●	●	●	●

The list of diabetic patients including a matrix or ALL complete and incomplete Diabetes Cycle of Care items is now produced to assist the practice in targeting specific activities for effective diabetes care. The practice may also benefit from PIP payments by using this matrix.

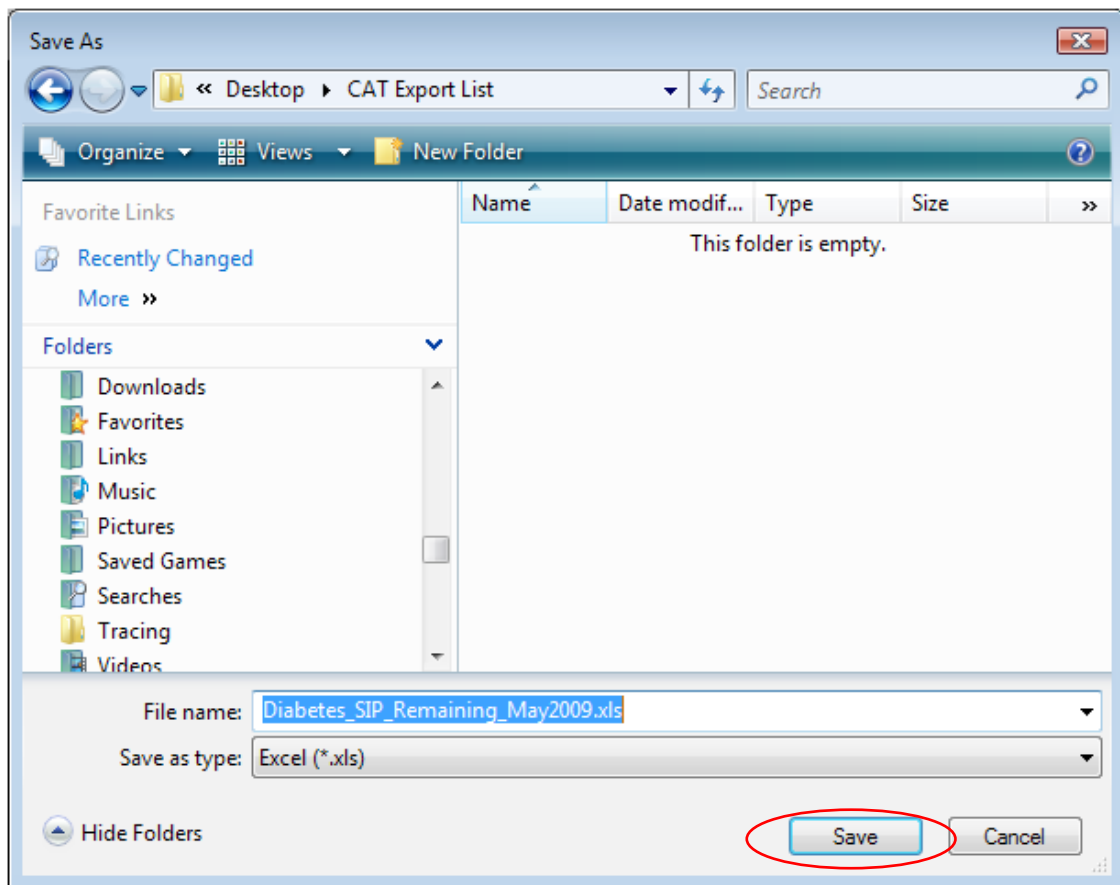




CLINICAL AUDIT TOOL

To Export Patient List to Microsoft Excel:

1. Click on the "Export Icon" at the top of the Patient Reidentification window.
2. Click on "Excel"
3. Choose a file name (eg. DiabetesPIP_Matrix_Date.xls) and a location to save to (eg. Create a folder C:/ClinicalAudit/CAT Patient FollowUp)
4. Click "Save"



The practice now has a list of patients with contact details in MS Excel which can then be used to:

1. Go back through the individual patient records in the GP Clinical Desktop System (CDS) and update known records
2. Phone or prepare Mail Merge to recall patients for follow up of specific Diabetes Cycle of Care activities
3. Check off patients against whom the Diabetes PIP can be claimed for the practice